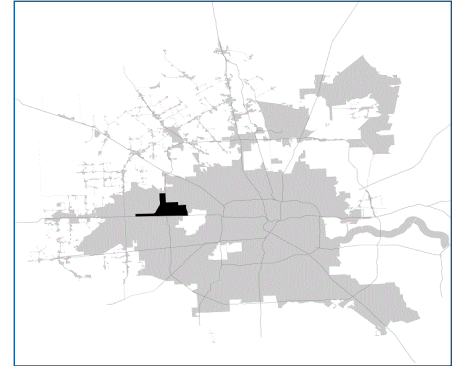


SUPER Neighborhood RESOURCE ASSESSMENT



	Super Neighborhood		Houston	
	2000	2019	2000	2019
Pop. characteristics				
Total population	32,423	32,251	1,953,631	2,310,432
Persons per sq. mile	4,423	3,925	3,166	3,443
Age of Population				
Under 5 years	9%	9%	8%	8%
5- 17 years	20%	18%	19%	17%
18- 64 years	63%	63%	64%	65%
65 and over	8%	10%	9%	10%
Ethnicity				
Non Hispanic Whites	35%	32%	31%	24%
Non Hispanic Blacks	6%	4%	25%	22%
Hispanics	53%	58%	37%	45%
Non Hispanic Asians	5%	5%	6%	7%
Non Hispanic Others	1%	1%	1%	2%
Income				
Under \$25,000	31%	19%	33%	24%
\$25,000 to \$49,999	32%	25%	31%	24%
\$50,000 to \$99,999	28%	31%	24%	27%
Over \$100,000	9%	25%	12%	25%
Median Household Income	\$39,645	\$62,147	\$36,616	\$52,338
Educational Status				
No Diploma	35%	28%	30%	21%
High School Diploma	20%	22%	20%	23%
Some College	25%	23%	23%	23%
Bachelor's or Higher	21%	27%	27%	33%
Housing and Households				
Total housing units	11,032	12,676	782,378	968,704
Occupied	95%	89%	92%	89%
Vacant	5%	11%	8%	11%
Total households	10,469	11,283	717,945	858,374
Family households	7,613	7,634	457,549	521,891
Median Housing Value	\$81,359	\$253,590	\$79,300	\$171,800

Description

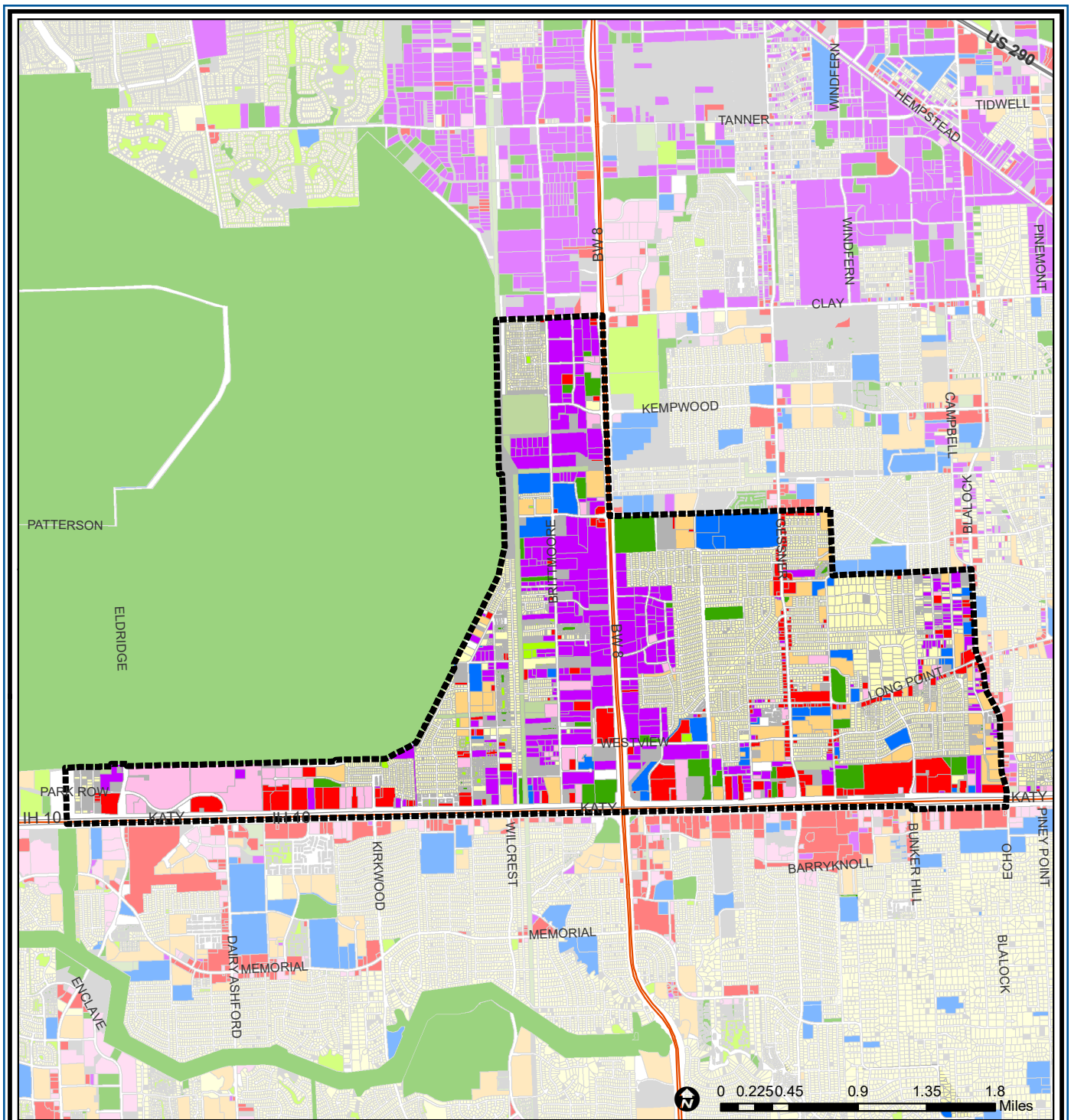
Spring Branch West is located north of I-10 and west of Blalock. Gessner Road and W. Sam Houston Parkway North are the major north-south arteries in the area. Light industrial uses, including distribution centers, are located along the Parkway. The majority of retail commercial development is found along Gessner Road and Interstate 10. The area is largely deed restricted single-family residential. Multi-family uses are concentrated along Long Point Road, Gessner and Blalock. New home construction has recently resumed on small sites in the southeastern part of the community where land prices have risen dramatically.

Highlights

- ✓ Houston City Council Districts A & G
- ✓ Cypress-Fairbanks Independent School District
- ✓ Spring Branch Independent School District
- ✓ 8 Police beats (includes bordering beats)
- ✓ 5,260 acres (8.22 sq. miles)



PLANNING & DEVELOPMENT DEPARTMENT



Spring Branch West : Land Use

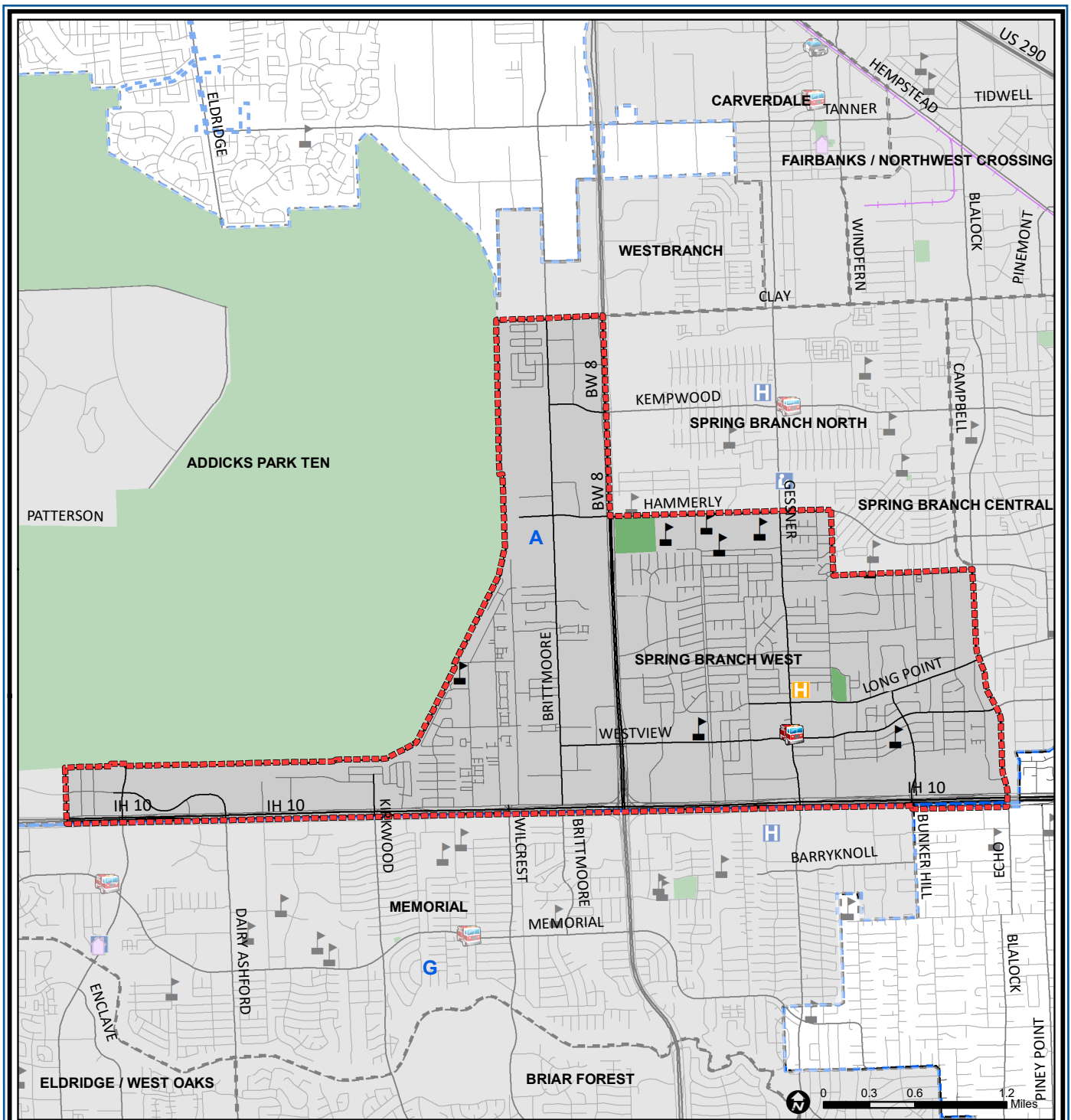
Source: City of Houston GIS Database, HCAD
Date: April 2021

- | | | |
|-----------------------------|------------------------------|-------------------------|
| Freeway | Commercial | Parks and Open Space |
| Rail Road | Office | Undeveloped |
| Super Neighborhood Boundary | Industrial | Agricultural Production |
| Single-family Residential | Public and Institutional | Open Water |
| Multi-family Residential | Transportation and Utilities | Unknown |

This map is made available for reference purposes only and should not be substituted for a survey product. The City of Houston will not accept liability of any kind in conjunction with its use.



PLANNING & DEVELOPMENT DEPARTMENT



Spring Branch West : Public Facilities

Source: City of Houston GIS Database

Date: April 2021

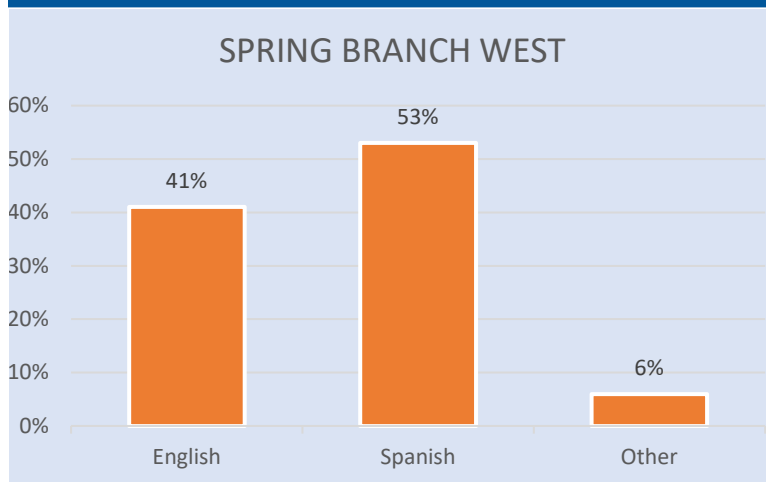
This map is made available for reference purposes only and should not be substituted for a survey product. The City of Houston will not accept liability of any kind in conjunction with its use.

- | | | |
|-----------------------------|-------------------------|---------------------|
| Super Neighborhood Boundary | Airports | Rail Road |
| Community Centers | Harris County Hospitals | Metro Rail Stations |
| Fire Station | Private Hospitals | Metro Rail Line |
| Police Station | Other Health Facilities | Parks |
| School | Library | TIRZ |

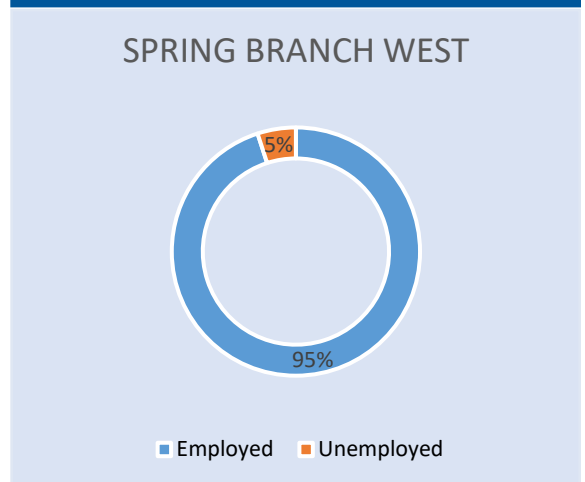


PLANNING & DEVELOPMENT DEPARTMENT

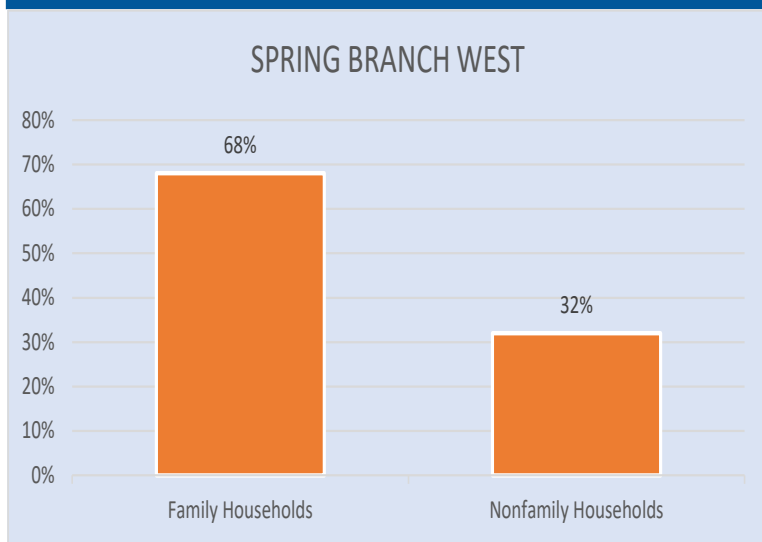
Language Spoken at Home



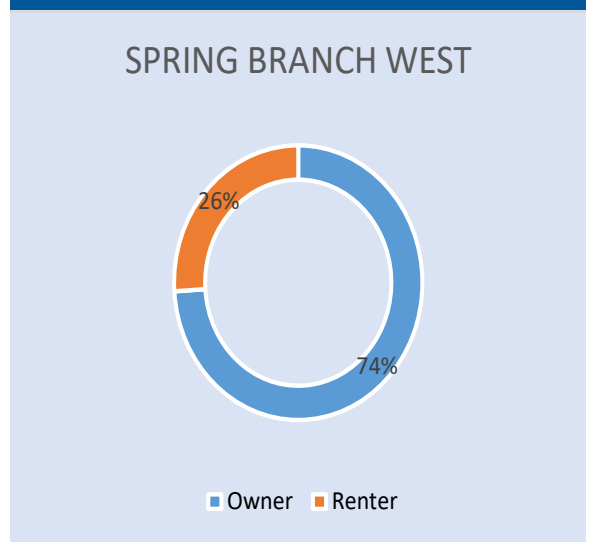
Employment Status



Family Status



Housing Occupancy



Source: U.S. Census Bureau, 2000
American Community Survey, 2015-2019 Estimates



**PLANNING &
DEVELOPMENT
DEPARTMENT**